

DRESS OR SMOCK-STYLE SHIRT

Pattern Pieces: A. DRESS- 1./ Front- cut 1 on fold
2./ Back- cut 2
B. SLEEVE- cut 2

Notions: approx. 3/4 yd. fabric
Thread
Snaps
1/8" elastic braid

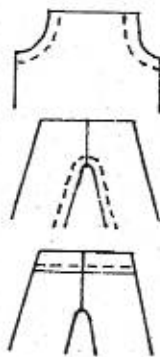
1. Cut out FRONT by doubling fabric and cut on fold.
2. Cut out BACK by doubling fabric and cut out, not on the fold.
3. Cut out SLEEVES with fabric doubled.
4. Hem SLEEVE cuff and sew on a length, the circumference of the wrist, of 1/8" elastic.
5. Stitch SLEEVE to armhole edges of FRONT and BACK.
6. Stitch FRONT to BACKS, right sides together, from cuff, under sleeve and down sides.
7. Fold over 1/4" all along top of DRESS and attached SLEEVES. Fold again and sew forming a 1/4" casing. Insert elastic that is the same circumference as the doll's neck and tack down securely at each end of casing.
8. Hem open BACK seams and sew on desired number of snaps. The open BACK makes it easier for the child to dress and undress the doll.
9. Hem the DRESS bottom the desired length.

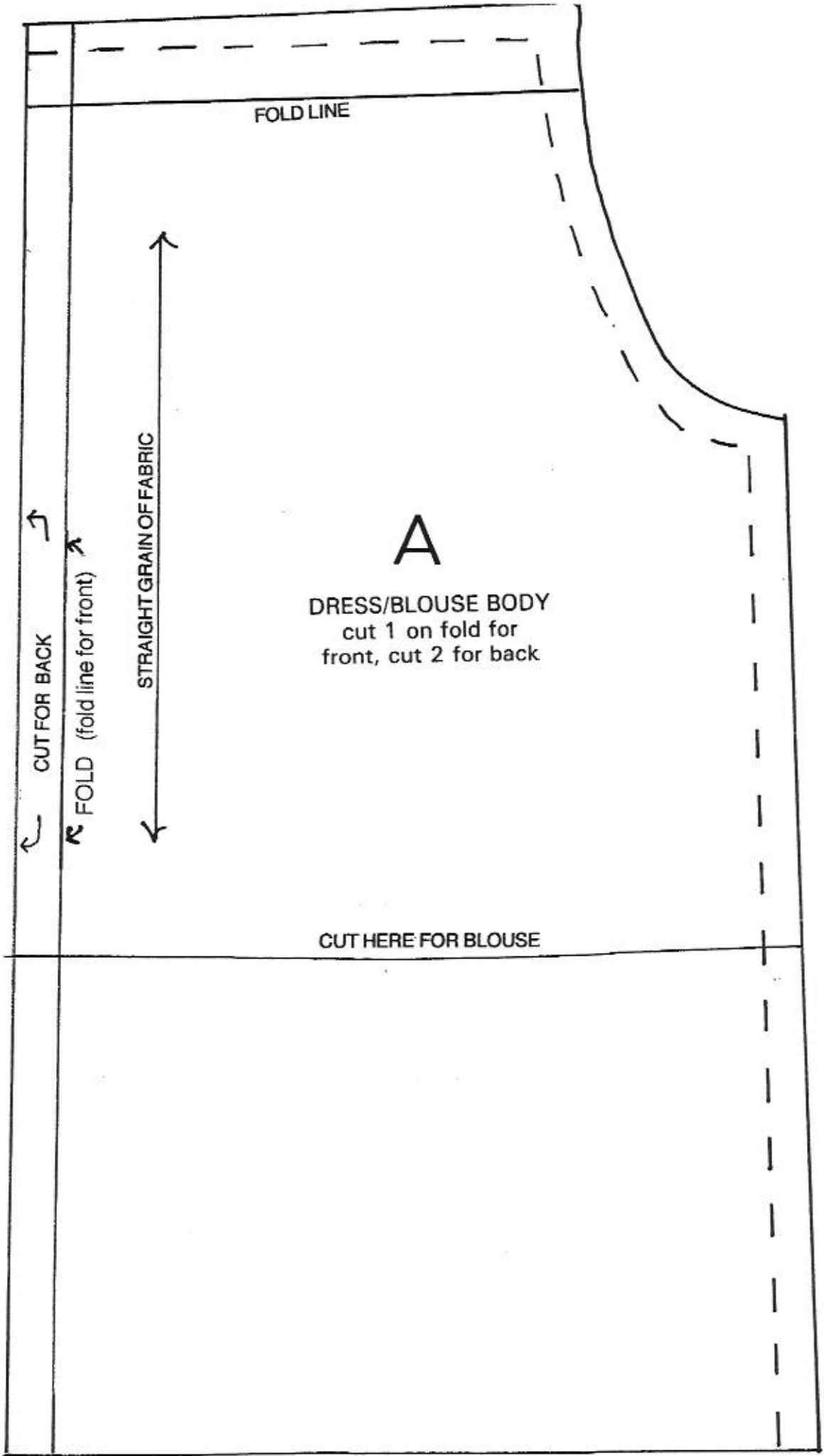
PANTALOONS OR TROUSERS

Pattern Pieces: C. PANTALOONS or PANTS- cut 2 to appropriate length

Notions: 1/2 yd. fabric- depending on fabric pattern
Elastic
Thread

1. For PANTALOONS- hem the bottom of the legs and sew on elastic the circumference of the thigh.
2. For PANTALOONS and PANTS- with right sides together, stitch together from waist to crotch on both sides.
3. Refold, and starting at crotch, stitch down one leg. Start again at crotch and stitch down the other leg.
4. With PANTS still inside out, turn and sew a 1/2" casing at the waist, into which you thread elastic.
5. Hem PANT legs. Lace or fringe can be added for PANTALOONS.
6. Optional: For overall look add shoulder straps (suspenders) crossing in the back so they stay on shoulders.





FOLD LINE

A

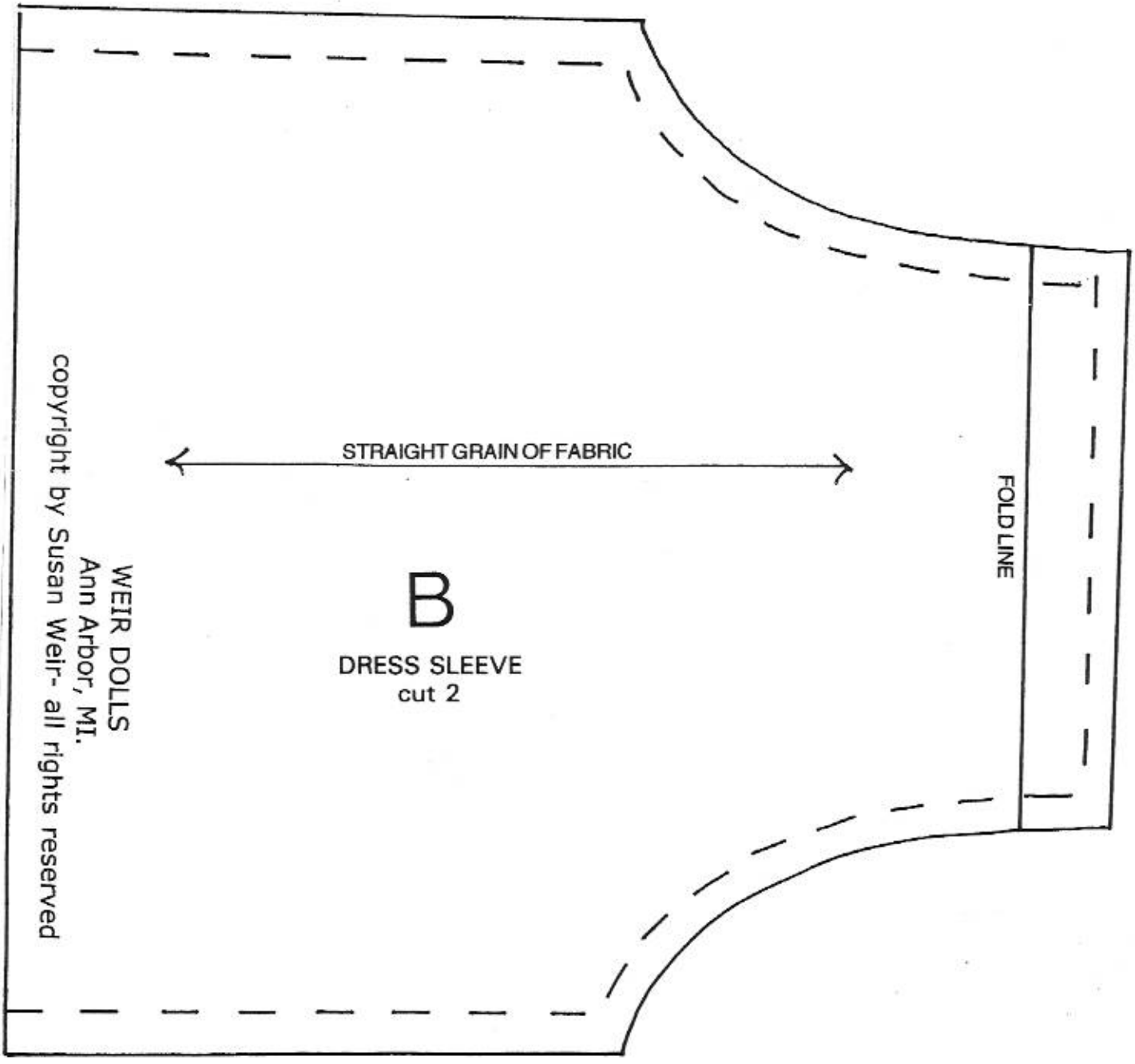
DRESS/BLOUSE BODY
cut 1 on fold for
front, cut 2 for back

CUT FOR BACK

FOLD (fold line for front)

STRAIGHT GRAIN OF FABRIC

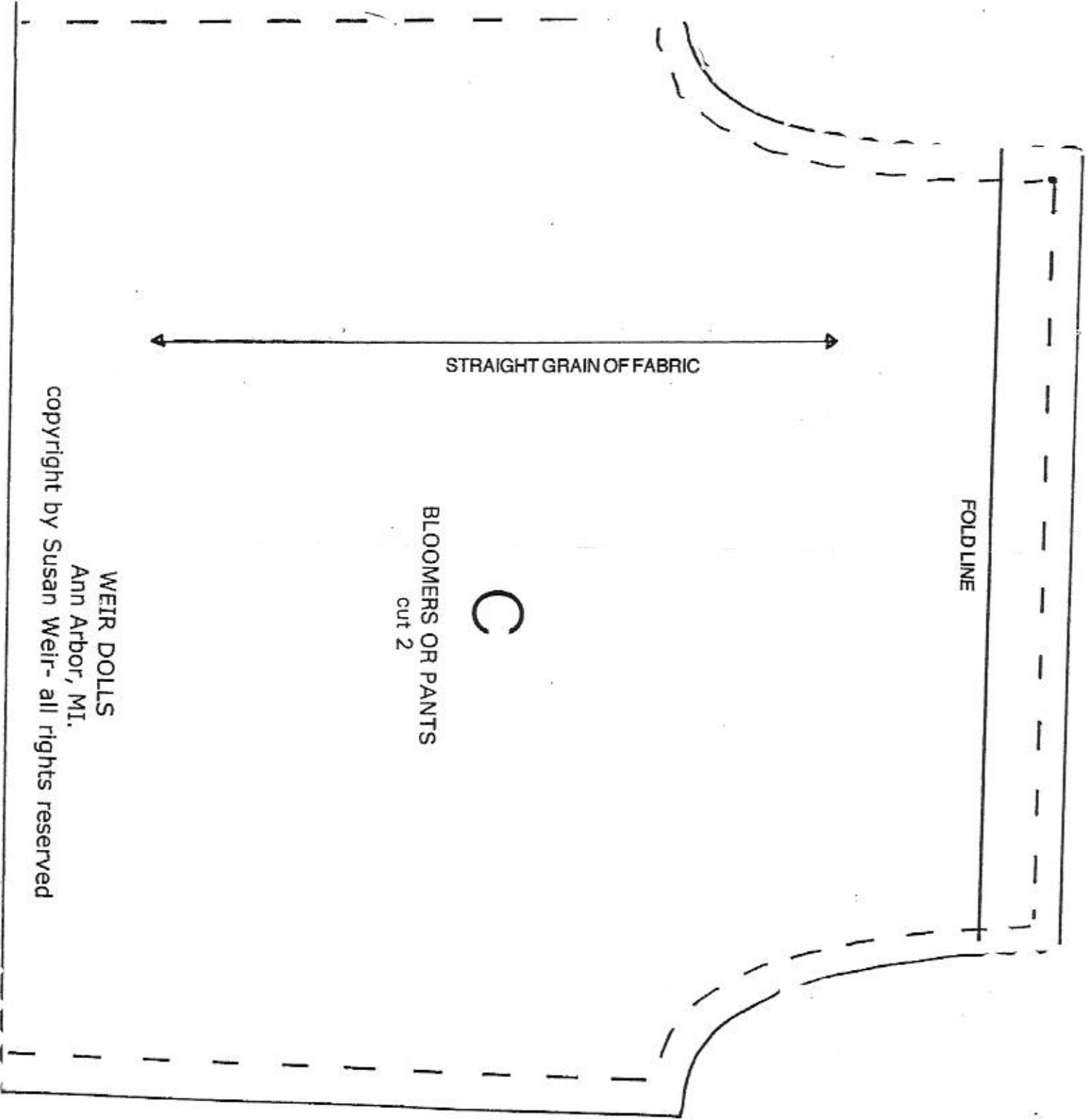
CUT HERE FOR BLOUSE



B

DRESS SLEEVE
cut 2

WEIR DOLLS
Ann Arbor, MI.
copyright by Susan Weir- all rights reserved



FOLDLINE

STRAIGHT GRAIN OF FABRIC

C

BLOOMERS OR PANTS
cut 2

WEIR DOLLS
Ann Arbor, MI.
copyright by Susan Weir- all rights reserved